

# **BIXOLON SAMSUNG USB & LPT Device Driver Installation Manual**

## **Printer Model**

**SRP -350/SRP-370  
SRP-372/SRP-270  
SRP-275/SRP-280  
SRP-500/SRP-350F  
SRP-350plus**

---

## Contents

<b>1. Foreword ...</b>	<b>2</b>
<b>2. Operating Environment ...</b>	<b>2</b>
<b>3. Installing the USB Device Driver ...</b>	<b>3</b>
3.1 Windows 98/ME ...	3
3.2 Windows 2000 ...	7
3.2 Windows XP/2003 ...	10

## 1. Foreword

---

When interface of printer is USB type or “Add new hardware wizard” is pop-up from LPT PnP(plug-and-play), This manual explains how to install the Windows Driver.

## 2. Operating Environment

---

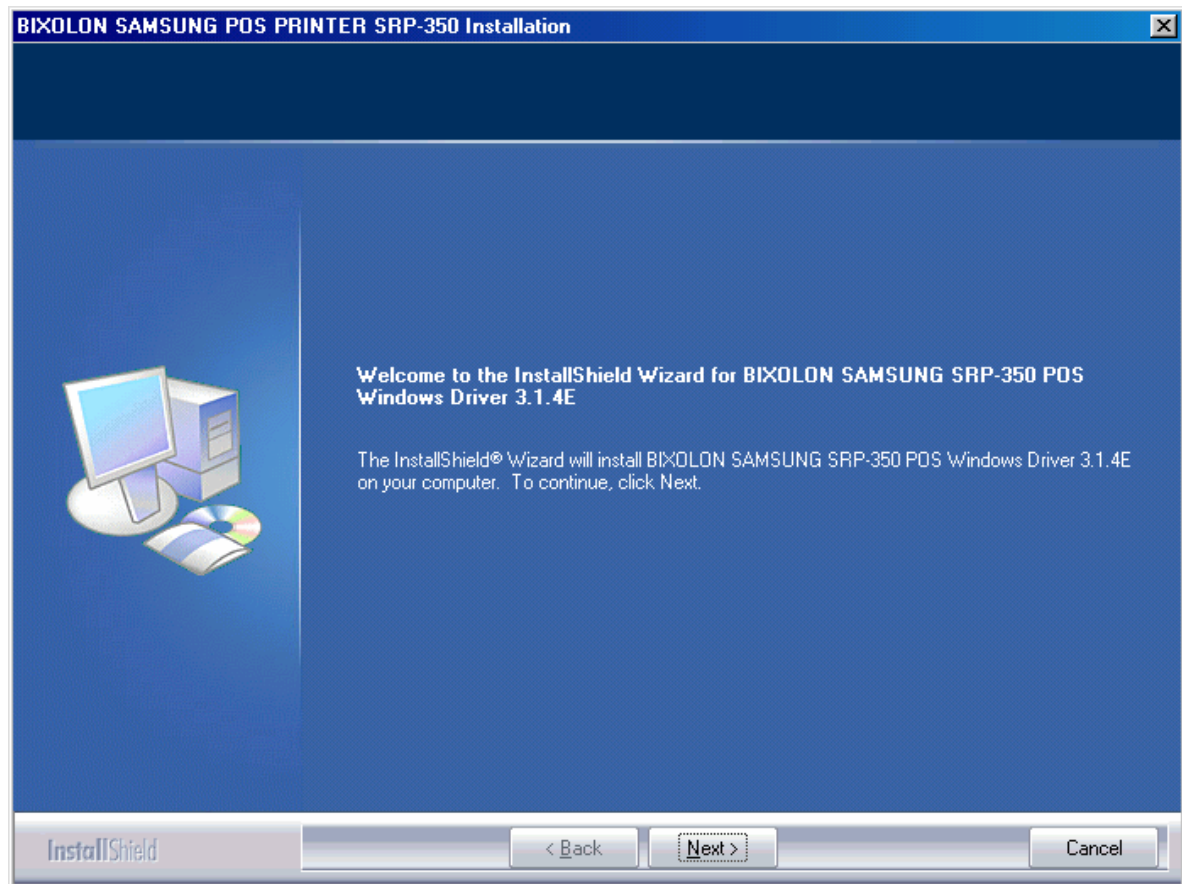
- Microsoft Windows 98 Gold
- Microsoft Windows 98 Second Edition
- Microsoft Windows Millennium Edition
- Microsoft Windows 2000
- Microsoft Windows XP
- Microsoft Windows 2003 Server
- Microsoft Windows Embedded For Point Of Service

### 3. Installing the USB Device Driver

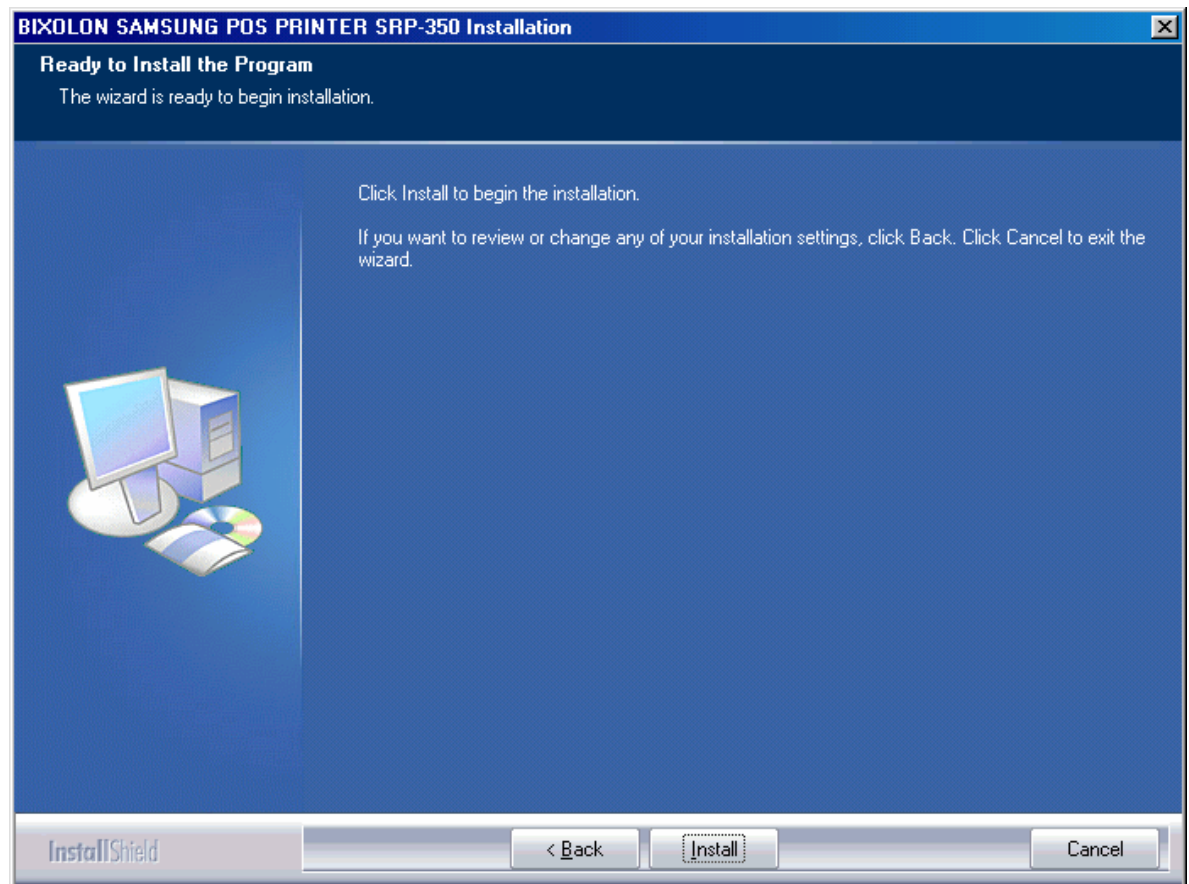
---

#### 3.1 Windows 98/ME

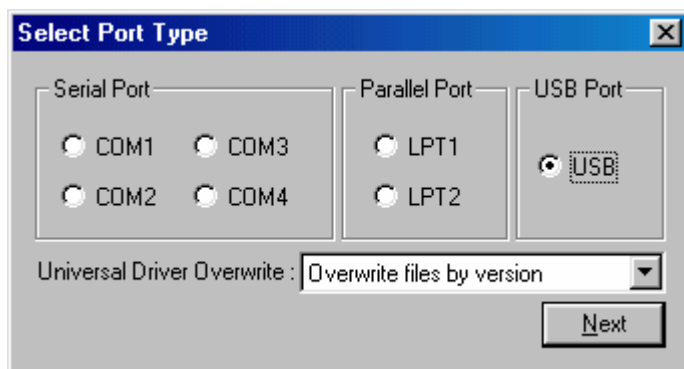
- (1) Double click Installer file.
- (2) Click "Next" Button.



(3) Click "Install" Button.



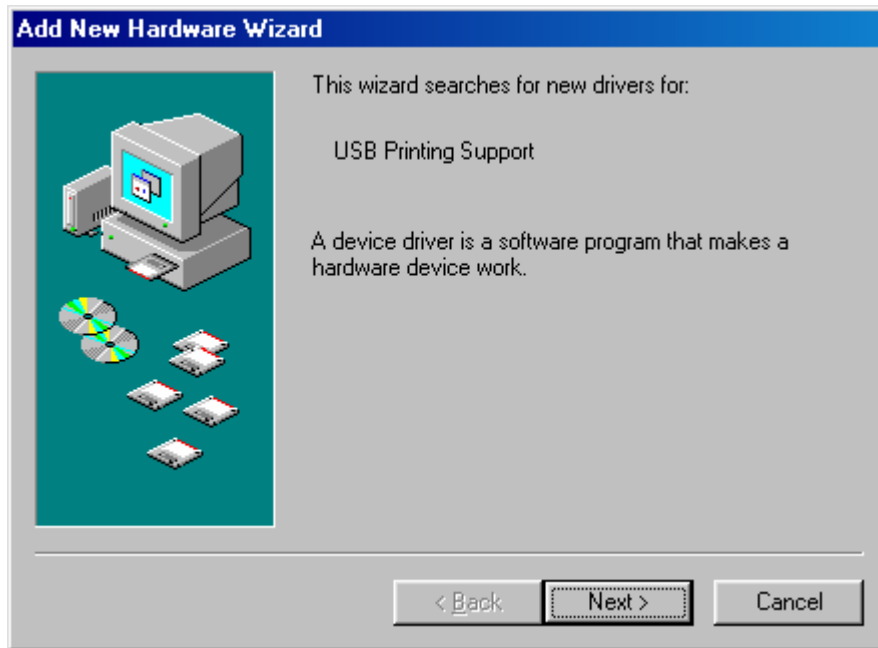
- (4) Select "USB" interface(port) type.



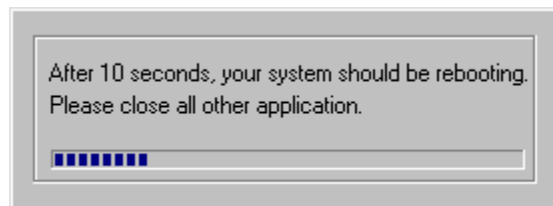
- (5) After restarted, turn-on printer.



- (6) If “Add new hardware wizard” for install “USB print support” driver is pop-up, click “Next” button.



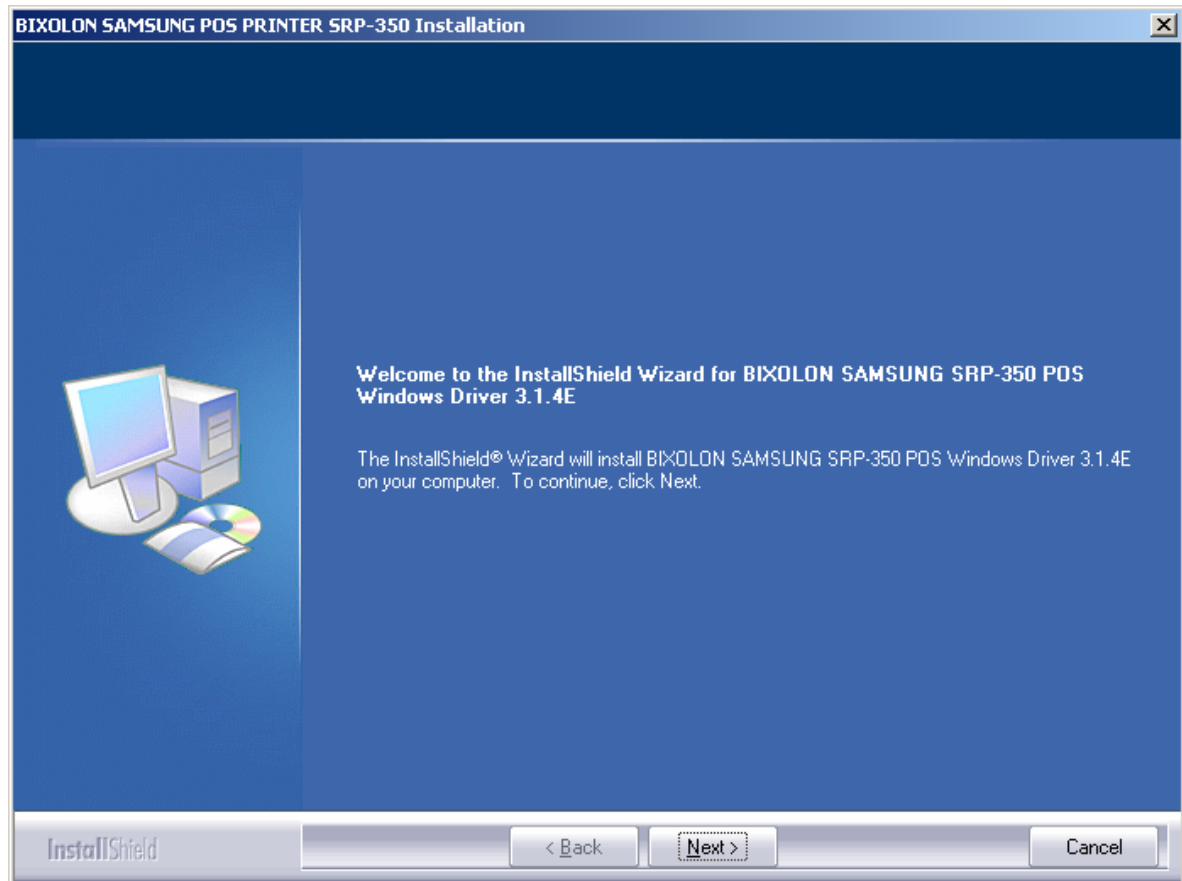
- (7) Please click “Next” button three times.
- (8) When “USB print support” driver has installed, your system automatically restart after 10 seconds.



- (9) After “USB print support” driver has installed, printer driver automatically has installed.

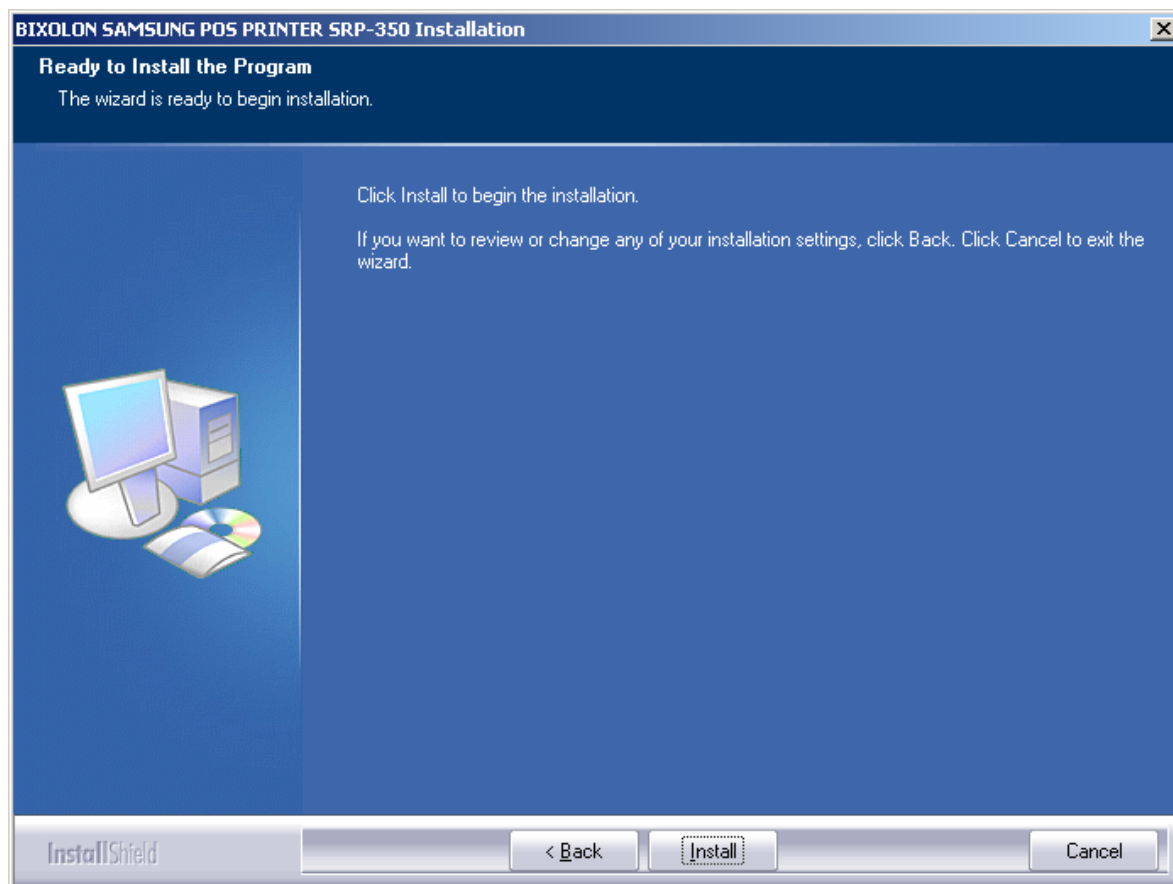
### 3.2 Windows 2000

- (1) Double click Installer file.
- (2) Click "Next" Button.

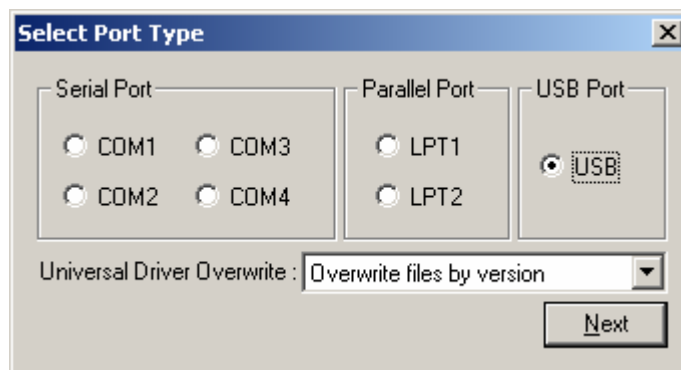




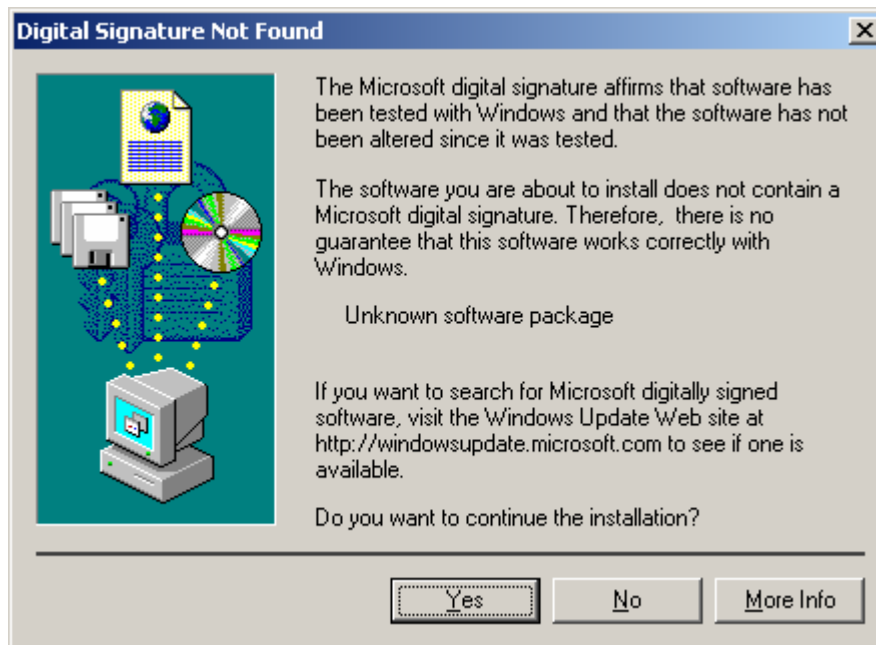
- (3) Click "Install" Button.



- (4) Select "USB" interface(port) type.



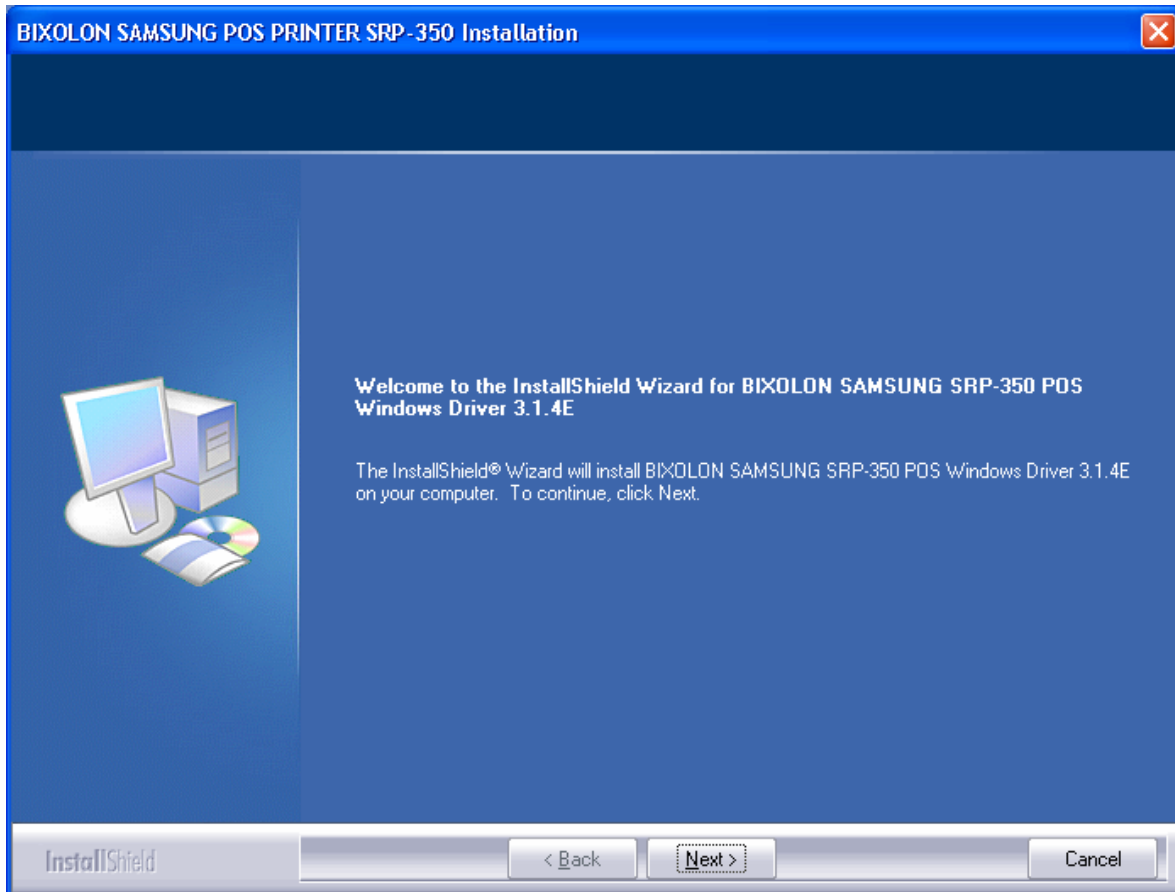
- (5) Please turn-off printer and turn-on printer.



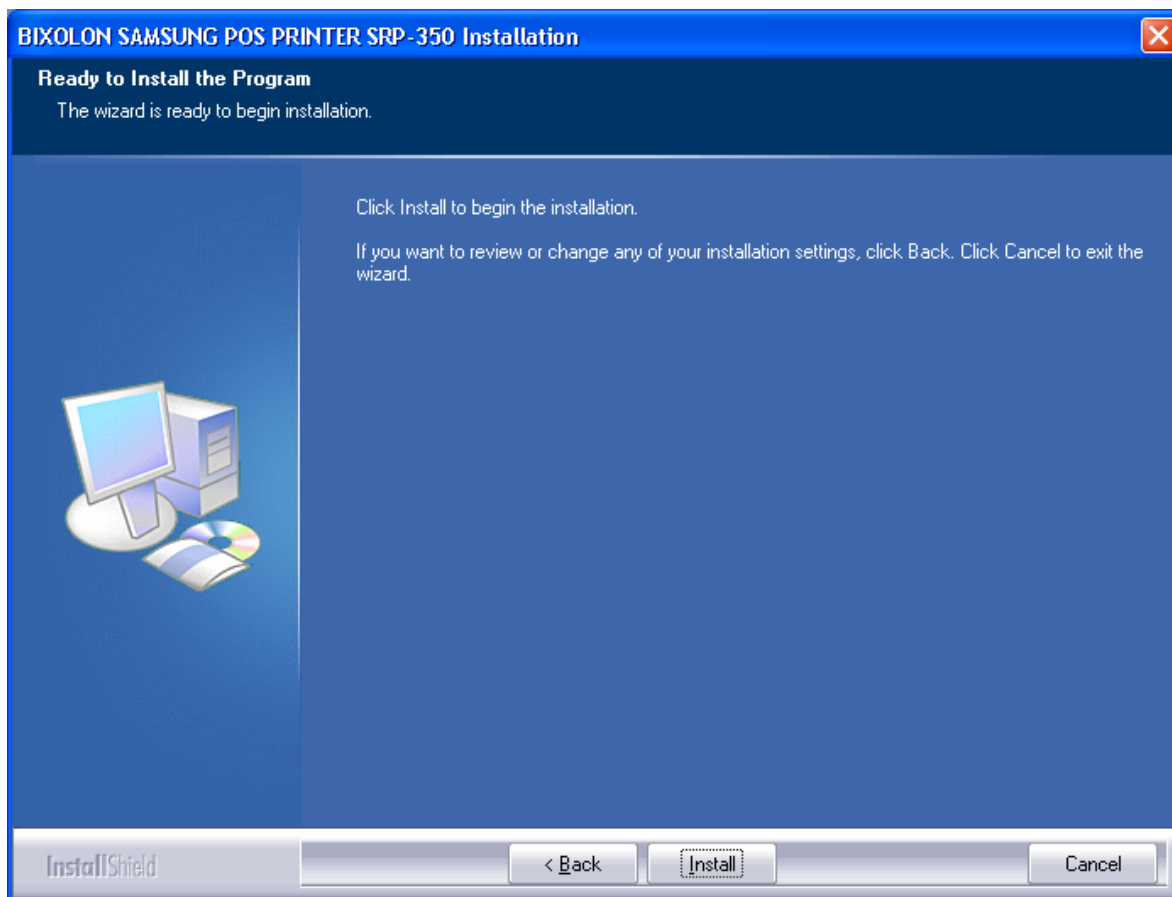
**\*If you can see this dialog, don't worry comment of dialog.  
Printer and driver works well. Please click "Yes" button.**

### 3.3 Windows XP

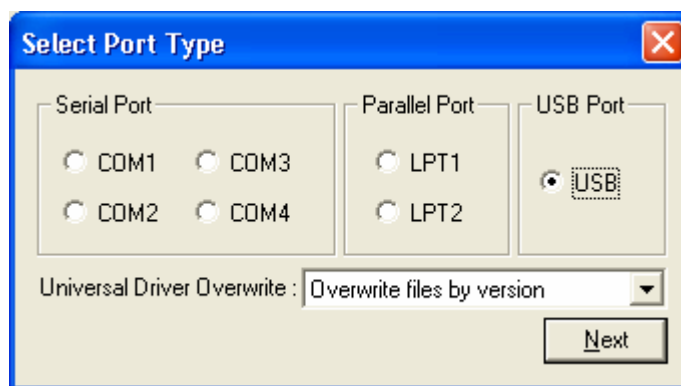
- (1) Double click Installer file.
- (2) Click "Next" Button.



(3) Click "Install" Button.



(4) Select "USB" interface(port) type.



(5) Please turn-off printer and turn-on printer.

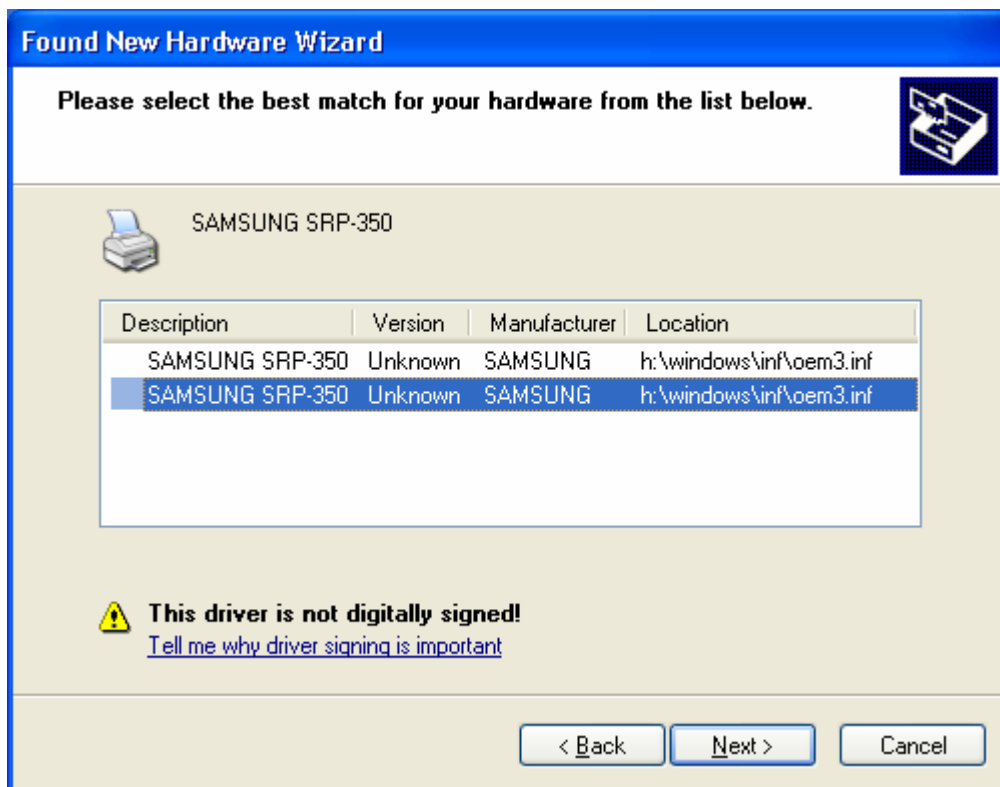


**\*If you can see this dialog, don't worry comment of dialog.  
Printer and driver works well. Please click "Continue Anyway" button.**

- (6) If “Add new hardware wizard” for install driver is pop-up, click “Next” button.



(7) Please click “Next” button until you can see “Finish” button.



**\*If you can see this dialog, don't worry comment of dialog.  
Printer and driver works well. Please click “Continue Anyway” button.**

(8) Please click “Finish” button.

